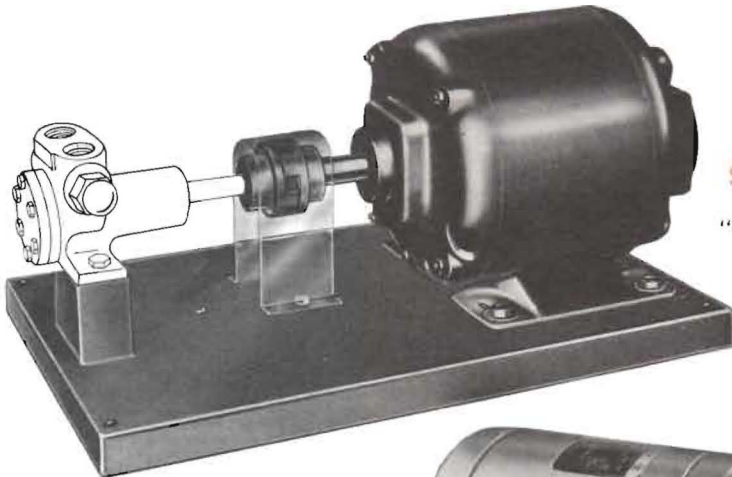
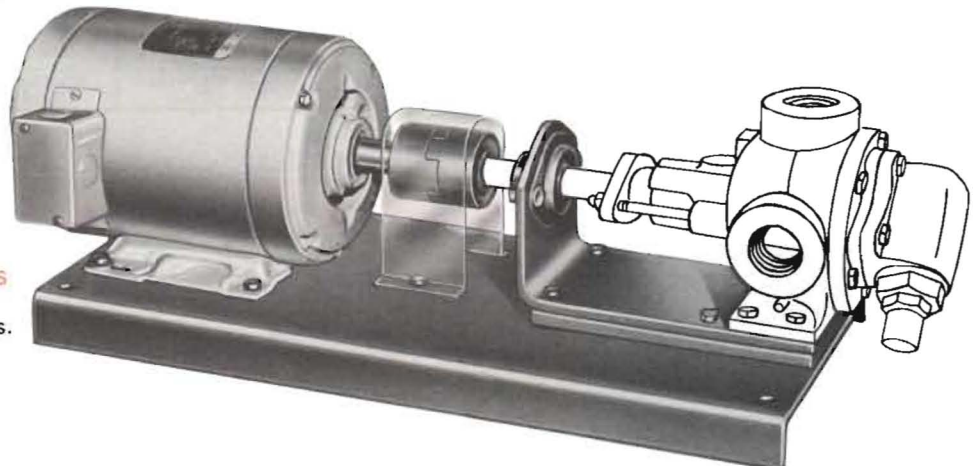


DIRECT CONNECTED UNITS ("D" DRIVE)



SERIES 32 and 432 Pumps
with "D" Drive,
"C", "F" and "FH" size pumps.



SERIES 32 and 432 Pumps
with "D" Drive,
"G", "H" and "HL" size pumps.

The direct drive unit incorporating a "C", "F" or "FH" size pump is direct driven from an 1800 RPM motor. All pumps and motors are connected through flexible couplings with guards and mount on formed steel bases.

The direct drive unit in "G," "H" or "HL" size include a pump mounted on a short bracket base with a sealed, radial type ball bearing supported shaft. The bracket

mounted pump in turn mounts on a formed steel base and is connected to a 1200 RPM motor through a flexible coupling with guard. This drive arrangement makes a compact, quiet operating unit for all six sizes.

Dimensions for "D" Drive Units—See Pages 310.13 and 310.14.

Performance Data for "D" Drive Units—See Pages 310.19 thru 310.30.

SPECIFICATIONS — "D" DRIVE UNITS

Model Number		Port Size	Nominal Pump Rating	Motor Horsepower Required at Rated Speed Pumping 100 SSU Liquid				Maximum Recommended Discharge Pressure PSIG			Maximum Recommended Temperature for Catalogued Pump °F.		Steel Fitted Construction Recommended Above this Viscosity SSU	Maximum Hydrostatic Pressure PSIG	Approximate Shipping Weight With Valve (Less Power) Pounds
Packed	①Mech. Seal	Inches	GPM	RPM	25 PSI	50 PSI	100 PSI	Less than 100 SSU	Fuel Oil Less than 100 SSU	110 SSU and Up	Packed	Mechanical Seal			
C32D	C432D	¼	½	1800	¼	¼	¼	② 100	② 150	③ ④ 250	⑤ 300	⑤ 225	750	26
F32D	F432D	½	1½	1800	¼	¼	¼	② 100	② 150	③ ④ 250	⑤ 300	⑤ 225	750	27
FH32D	FH432D	½	3	1800	¼	¼	½	② 100	② 150	③ ④ 250	⑤ 300	⑤ 225	750	29
G32D	G432D	1	5	1200	½	½	¾	50	100	300	225	① 25,000	400	45
H32D	H432D	1	10	1200	½	¾	1½	50	100	300	225	① 25,000	400	70
HL32D	HL432D	1½	20	1200	¾	1½	2	50	100	300	225	① 7,500	400	75

① Mechanical Seal pumps not recommended on applications with viscosities above 15,000 SSU.

② 50 PSI maximum for bronze fitted pumps.

③ 100 PSI maximum for bronze fitted pumps.

④ With extra clearance, pumps can be used to 500 PSI on intermittent duty.

⑤ With special construction, temperatures to 500° F. can be handled with seal pumps and to 650° F. with packed pumps.